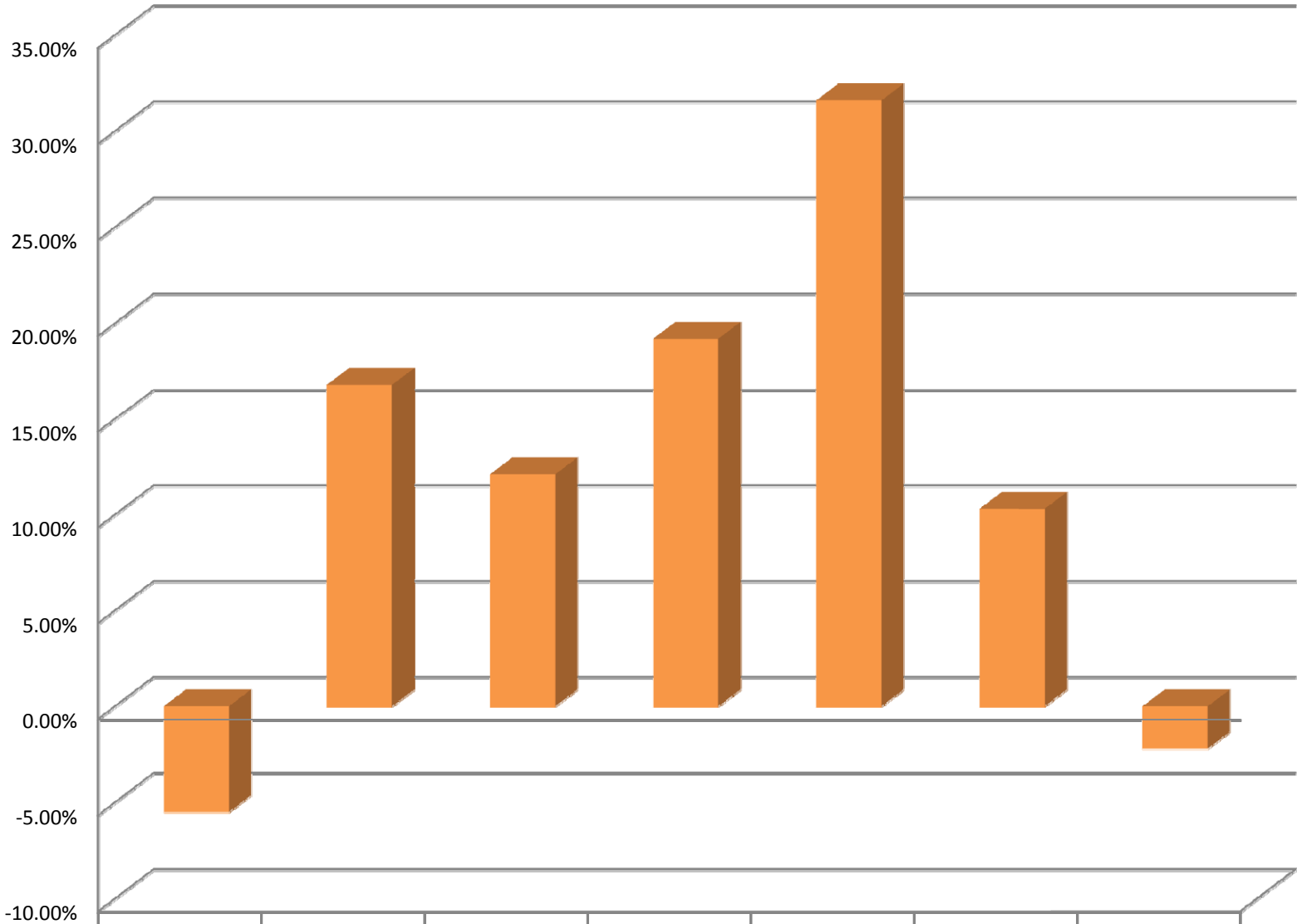


Total Citation Charges



■ Total Citation Charges

400

-5.50%

500

16.80%

600

12.1%

700

19.20%

800

31.60%

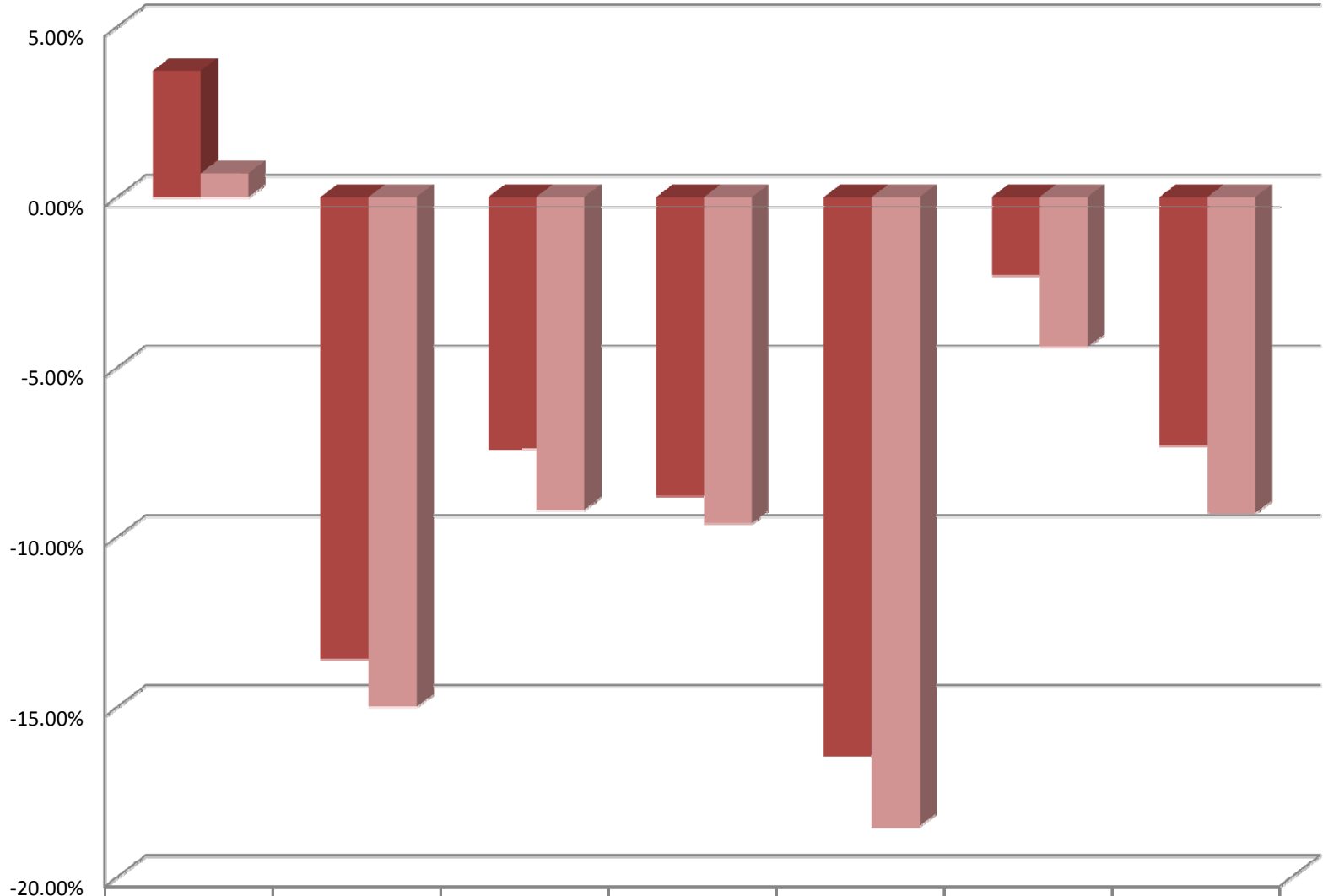
900

10.30%

Citywide

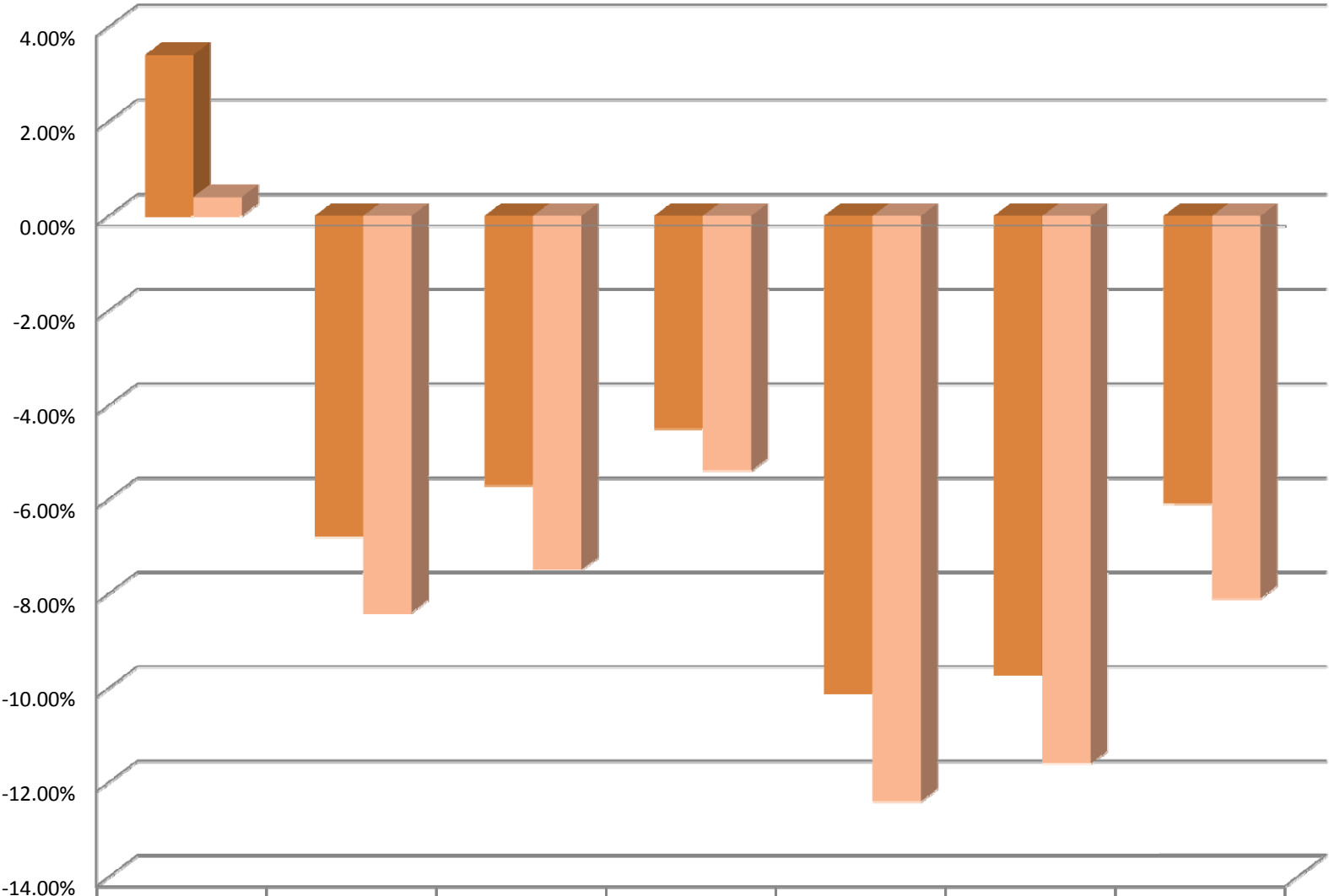
-2.20%

Property Crimes



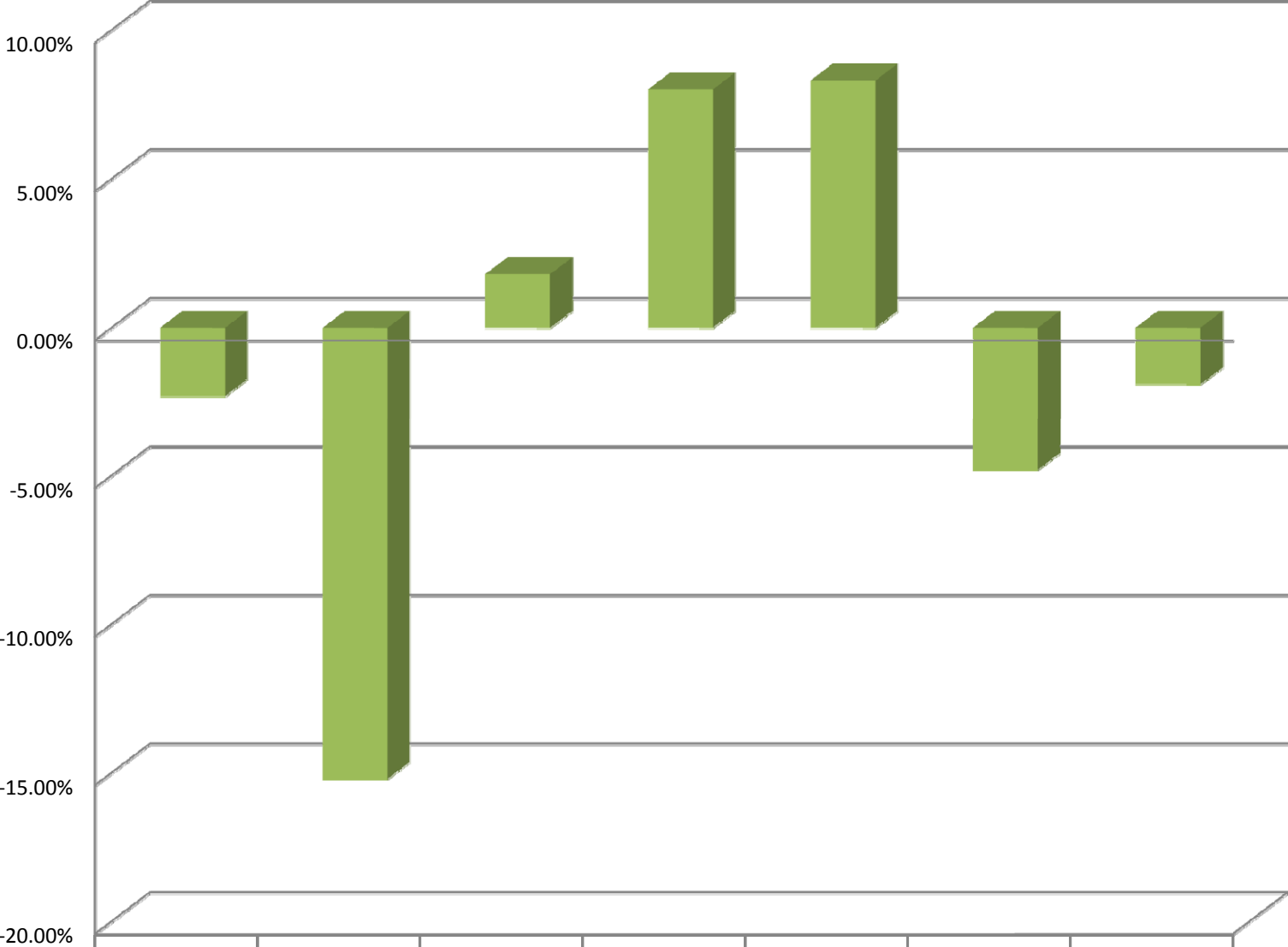
	400	500	600	700	800	900	Citywide
■ Total Property Crimes	3.70%	-13.60%	-7.40%	-8.80%	-16.40%	-2.30%	-7.30%
■ Property Crime Rate5	0.70%	-15.00%	-9.20%	-9.60%	-18.50%	-4.40%	-9.30%

Violent Crime



	400	500	600	700	800	900	Citywide
Total Violent Crimes	3.40%	-6.80%	-5.70%	-4.50%	-10.10%	-9.70%	-6.10%
Violent Crime Rate5	0.40%	-8.40%	-7.50%	-5.40%	-12.40%	-11.60%	-8.10%

Total Bookings/Detentions



	400	500	600	700	800	900	Citywide
■ Total Bookings/Detentions	-2.30%	-15.20%	1.80%	8.00%	8.30%	-4.80%	-1.90%